



Aim High, Kindness, Community

The Broadmeadow

Connection

October 2024

www.brdmedoi.bham.sch.uk

Dear Parents and Carers,

As we reach the halfway point of this autumn term, I would like to take a moment to reflect on the many exciting developments and accomplishments at Broadmeadow so far. It has been a busy and productive start to the school year, and I am incredibly proud of how our children and staff have embraced new initiatives and settled back into the school community with enthusiasm and resilience.

This term, many of the children had their flu vaccinations to ensure our pupils' well-being and positive attendance so their learning is less disrupted during the colder months. We are delighted to welcome Premier Education as our Wrap Around Care provider, offering flexible, high-quality care for our students outside of school hours. Many parents have commented positively on the provision.

Open Evenings for prospective Reception parents have been held, showcasing our refreshed, vibrant learning environment to the families considering joining our Broadmeadow family next year. Additionally, we've been hard at work with building improvements, including the enhancement of our external pathways to ensure safer access for everyone on site.

Our focus on communication continues with parent information evenings, held for each year group to give insight into what your children will be learning this year, alongside important routines. We are also pleased to have launched Class Dojo to sit alongside MCAS as a new messaging tool, allowing even more direct and timely communication between parents and teachers.

As part of our ongoing commitment to supporting the well-being and positive behaviour of our pupils, we have introduced the 'My Happy Mind' approach, where children are learning how their brains work and how to manage their emotions—an important life skill! This also gives access to an app for staff and parents. On a related note, the NHS PINs meetings have started, providing a valuable platform for supporting communication with parents about neurodiversity and approaches used in school.

To create a learning environment that best supports our children, we have refreshed our school displays with a focus on reducing cognitive load and making them a helpful tool to aid learning. Alongside these improvements, I'm pleased to share that all staff have undergone updated safeguarding training to ensure the safety and well-being of every child in our care.

I look forward to sharing more updates as the term continues. Thank you for your continued support and involvement in making Broadmeadow a wonderful place for learning and growth.

Mr K Medway

“Happy, vibrant, life-long learners”

“Happy, vibrant, life-long learners”

Birmingham & Solihull Women's Aid 0808 800 0028 Childline 0800 1111

Aim High, Kindness, Community





Aim High, Kindness, Community



Community



School Priorities for 2024-25: How You Can Get Involved

1. Quality of Teaching We are committed to providing the highest quality teaching, rooted in evidence-based practices. By supporting our teachers with ongoing training, we aim to boost student achievement across key areas like literacy and numeracy.

How you can help: Encourage your child to embrace learning at home, ask them about their school day, and maintain a positive attitude towards their education.

2. Curriculum Focus Our curriculum is designed to build strong foundational skills, ensuring every child can thrive. This year, we're focusing on core subjects like reading, writing, and maths, while keeping lessons engaging and supportive for all learners.

How you can help: Reinforce basic skills by practising reading and maths at home, and participate in school workshops to better understand our curriculum.

3. Targeted Support We are identifying students who need extra help in English and maths early on and providing swift, personalised intervention.

How you can help: Stay informed about your child's progress, attend meetings with teachers, and use recommended resources at home to support their learning.

4. Parental Engagement We value parents as key partners in education. A strong home-school partnership leads to better outcomes for students.

How you can help: Get involved by attending school events, workshops, and engaging in open communication with teachers. Even small actions like creating a homework routine can make a big difference.

5. Behaviour and Attendance We are promoting high expectations for behaviour and attendance. A positive and orderly school environment ensures that all students can learn without disruption.

How you can help: Ensure regular attendance, reinforce positive behaviour at home, and communicate any challenges with the school early on.

“Happy, vibrant, life-long learners”

“Happy, vibrant, life-long learners”

Birmingham & Solihull Women's Aid 0808 800 0028 Childline 0800 1111

Aim High, Kindness, Community



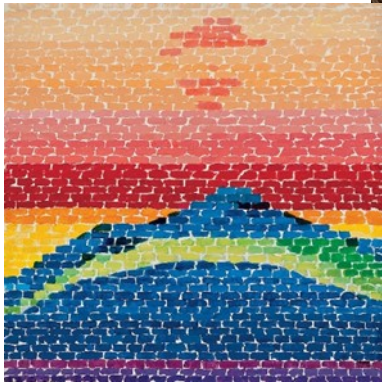


Year 2 have been learning about London this half-term. They sketched famous London landmarks such as Big Ben, Tower Bridge and The London Eye. They looked carefully at the detail and tried to copy the shapes and colours.

“Happy, vibrant, life-long learners”

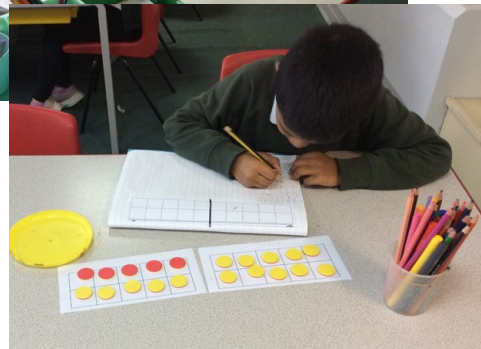
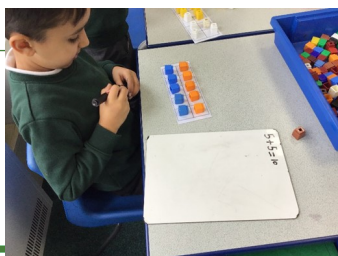


As part of Black History Month Year 2 have been learning about Alma Thomas who was the first African American woman to have her paintings displayed in museums across the USA.



“Happy, vibrant, life-long learners”

We have been learning and practising number bonds to 20. We used tens frames and counters to help us find all of them and wrote the number sentences in our books.





Aim High, Kindness, Community

Community

Music Club

The children had a lovely time at music club. We started with some warm up activities including a game where we crouch and get higher as we count from 0 to 10 and the dynamics increase. Then we played a listening game where we take turns to play a percussion instrument and the others listen and guess what they can hear. We then got the glockenspiels out and played along to Twinkle, Twinkle. After that we warmed up our voices and sung some harvest songs and finally we watched the musical story of The Gingerbread Man played by some members of the BBC Philharmonic Orchestra. Here is the link if you'd like to have a listen at home



<https://www.bbc.co.uk/programmes/m00158jj>

“Happy, vibrant, life-long learners”



A number of year 2 children took part in maths club and were successful in using their mathematical knowledge; having fun along the way.



In art club the children produced beautiful Autumn art-work

“Happy, vibrant, life-long learners”

PARENT AND CARER SURVEY OCTOBER 2024 - YOUR VOICE MATTERS

There was an issue with the survey that was put on the newsletter in the Summer Term. This has now been resolved.

Broadmeadow Infant and Nursery School Parent and Carer Survey
October 2024



You are invited to take this:

Broadmeadow Infant and Nursery School

Parent and Carer Survey

October 2024

Submissions can be made until 5pm on 3rd November 2024

<https://forms.office.com/e/LMWSWjuQh0>

Birmingham & Solihull Women’s Aid 0808 800 0028 Childline 0800 1111

Aim High, Kindness, Community

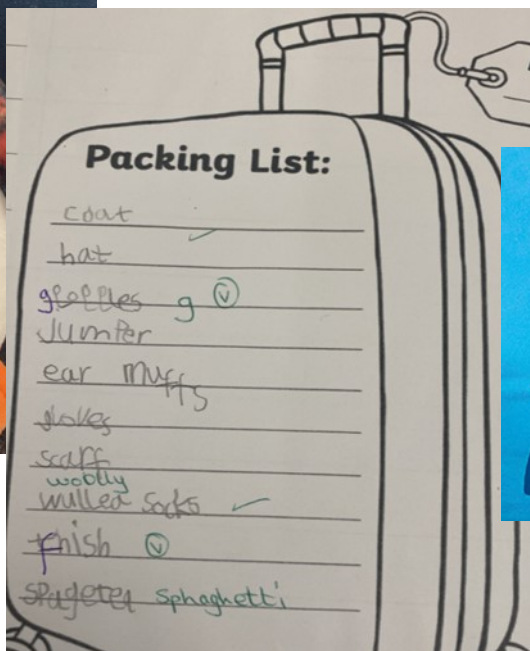
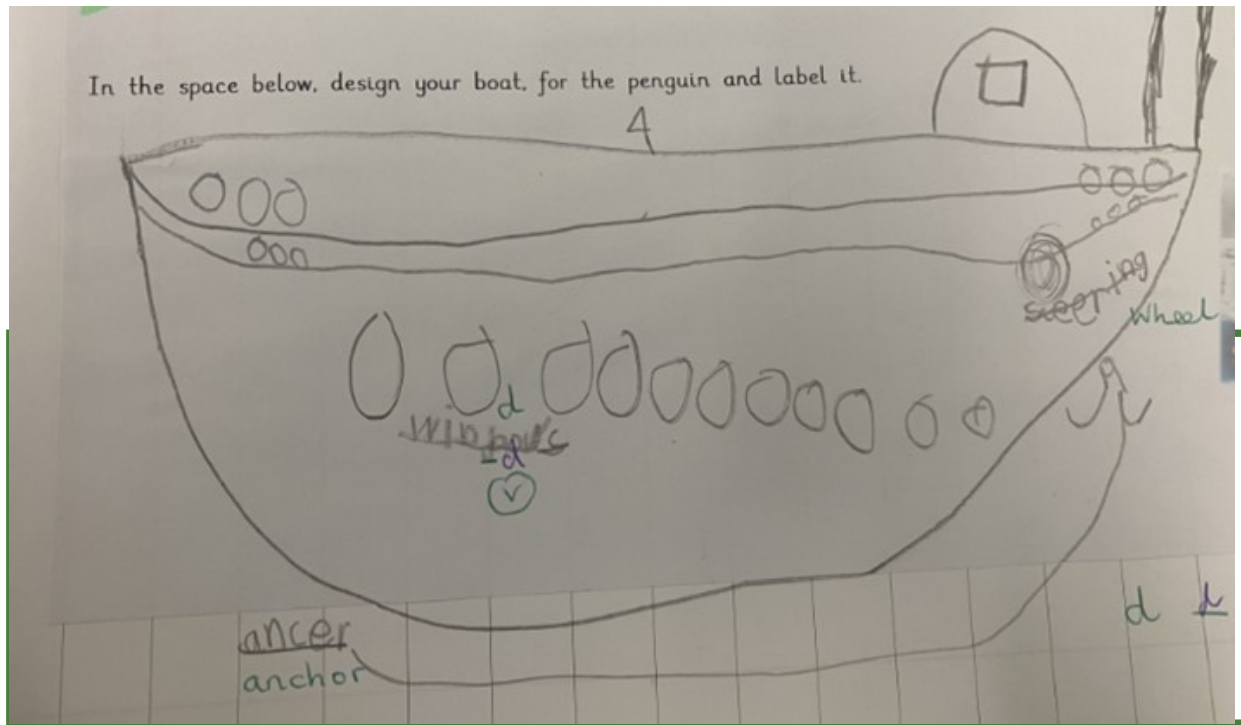


Aim High

In Year one, we have been reading the story of Lost and Found by Oliver Jeffers. We even had a visit from the penguin who set the children a series of challenges of helping him get back to the South Pole. These included, packing a selection of items in a suitcase and writing a list, applying our phonic knowledge. The children then went on to design and build a boat for the penguin to return safely.

“Happy, vibrant, life-long learners”

“Happy, vibrant, life-long learners”





Aim High, Kindness, Community

Aim High



Nursery have had a great start to the new academic year we have learnt about our feelings, about making good choices and about how we look. The children have learnt lots of new words to describe their hair, their skin, their eyes and what they like to do. They created some beautiful self portraits with the support of an adult, focusing on each part of their face. They made careful choices about the colours they chose and the shapes they needed to paint. Nursery have also learnt lots about pattern this half term, they were inspired by the work of a Nigerian artist called Odili Donald Odita and made some fabulous artwork which also helped us to hone our new glueing skills.

We ended the half term with our very own Halloween party where we enjoyed hot chocolate, mini muffins and practised our balancing skills freezing for a game of musical statues.

We are looking forward to

“Happy, vibrant, life-long learners”

“Happy, vibrant, life-long learners”



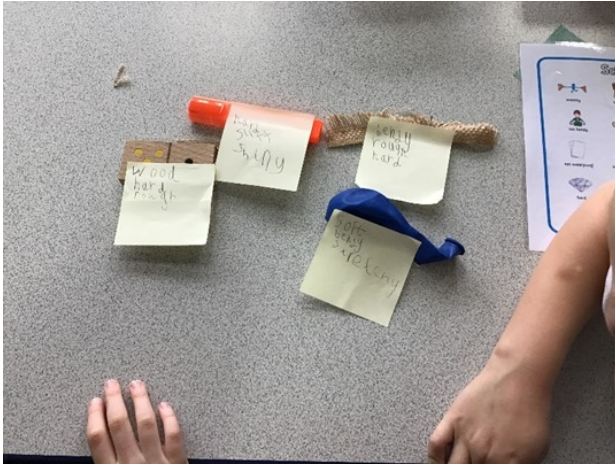
Birmingham & Solihull Women’s Aid 0808 800 0028 Childline 0800 1111

Aim High, Kindness, Community





Aim High



In science, year 2 practised and developed their scientific vocabulary to describe the properties of a range of materials

“Happy, vibrant, life-long learners”



It has been an exciting and busy first term for Reception as they settle into school life. We are so proud of how the children have adapted to their new routines and made positive relationships with their teachers and peers. We have enjoyed singing a range of nursery rhymes, exploring arts and crafts and we have learnt to retell 'The Little Red Hen'.... we even tried some delicious bread! More recently we have been noticing the changes to our environment as Summer turns to Autumn, we have been on an Autumn walk, made some beautiful leaf rubbings and carved a pumpkin



“Happy, vibrant, life-long learners”

PARENTS' EVENING

On Tuesday 5th October 2024 you will receive a link and message from your child's class teacher.

Parent/teacher consultations will be held on Tuesday 19th and Thursday 21st November 2024

Following feedback from last year, Infant and Junior school consultations will be held on the same nights.

Messages will be sent via ClassDojo and MCAS

Please ensure that you are connected and have notifications enabled.





Aim High, Kindness, Community

Community

“Happy, vibrant, life-long learners”

“Happy, vibrant, life-long learners”

Are You Eligible for Free School Meals? Sign Up Today to Support Your Child and Our School

Did you know that nearly 3,000 children in our area may be missing out on Free School Meals (FSM) even though they qualify? If your child is in Reception, Year 1, or Year 2 and already receiving Universal Free School Meals, you should still check if you qualify for additional support through FSM. Signing up could benefit your child—and our school.

Free School Meals not only provide nutritious, balanced meals—helping children eat more fruits and vegetables than typical packed lunches—but also support their overall health and well-being. With only 1.6% of packed lunches meeting the Government’s School Food Standards, FSM is an excellent way to ensure your child gets a healthy meal at school every day. Studies also show that children who receive FSM have better mental well-being, which can reduce anxiety and attention-related issues.

Each successful application also unlocks valuable Pupil Premium Funding for our school. This funding, which amounts to £1,445 per primary school child and £1,050 per secondary school child for 2024/25, directly supports resources and initiatives that enhance your child’s education.

Starting in November 2024, a council campaign will run to encourage more families to sign up for FSM. But you don’t have to wait—check if you qualify and apply today. Even if your child already receives Universal Free School Meals, signing up can make a big difference.

Let’s ensure that all eligible children benefit from this support. If you need help with the application process, please don’t hesitate to contact us for assistance. Your participation will not only benefit your child but also contribute to the success of our entire school community.

Together, we can make sure every child at Broadmeadow thrives!

Harvest Festival

A Heartfelt Thank You for Your Generous Donations

We would like to extend a huge thank you to all of the parents and carers who generously donated food items for our Harvest collection. Your contributions have been donated to the **Spearhead Trust**, which runs a local food bank supporting families in our community. Your kindness will make a real difference to those in need.

We also want to thank everyone who attended our **Harvest Festival**. We hope you enjoyed the children's wonderful singing and the songs they worked so hard to learn. Your support made the event truly special!



Birmingham & Solihull Women’s Aid 0808 800 0028 Childline 0800 1111

Aim High, Kindness, Community





Aim High, Kindness, Community

Community

COFFEE MORNING

Tuesday 5th November 2024

8:50am -10am

Calling all Parents/carers,



We will be hosting a SEND information coffee morning on Tuesday 5th November.

The coffee morning will be a space where SEND parents (whether children are diagnosed or on the pathway to diagnosis) can find out more about the specialist services and how they support pupils in school. It is also a great opportunity to meet other parent and carers who have children with SEND Needs.

All external agencies who currently work with school will be attending. Tracey Kenny (Pupil School Support), Rachael Mulcare (Educational Psychology Service), Matt Blackburn and Anna Geraghty (Communication & Autism Team) and Mariam Khalil (Speech & Language Therapy) will be available to offer support and advice.

We hope to see as many of you as possible and look forward to seeing you there!



“Happy, vibrant, life-long learners”

“Happy, vibrant, life-long learners”

Birmingham & Solihull Women’s Aid 0808 800 0028 Childline 0800 1111

Aim High, Kindness, Community





Aim High, Kindness, Community

Community



“Happy, vibrant, life-long learners”

“Happy, vibrant, life-long learners”

Train-to-Gain

*Offering free back to work training & support**

at The Brandwood Centre

We offer:

- Accredited Training
- Industry Specific Training Programmes in Education, Care, Retail & Hospitality
- Wellbeing Workshops
- Functional Skills Courses
- CV Support
- Careers Information, Advice & Guidance
- Volunteer Opportunities

To register or for more information

please call **0121 443 3310** or visit
www.brandwoodcentre.co.uk/training

Address: **157 Allens Croft Road, Kings Heath, Birmingham B14 6RP**

**to be eligible, participants must be aged 19+, live in Birmingham and currently unemployed.*



Birmingham & Solihull Women’s Aid 0808 800 0028 Childline 0800 1111

Aim High, Kindness, Community



Aim High, Kindness, Community

Community



Cosy Places & Friendly Faces

at The Brandwood Centre

Chatty Café

Every Tuesday
9.00am-11.30am



**Midweek
Winter Warmer**

Every Wednesday
(October-March)
3pm-6pm

A friendly face in a cosy place. Join us every Tuesday for a light breakfast in our pop-up café on Monday mornings. Hot toast and tea or a coffee and cake are all served with a friendly smile by our dedicated volunteers.

Wednesdays offer another opportunity to join us for a few hours of company. Chat away the evening or join in with a range of activities and enjoy a hot meal to finish off the day with a smile. Whilst you are here you can find out lots of information about what's on at The Brandwood Centre and the local area.

Everyone is welcome! To book your place, call us on 0121 443 3310 or pop into our centre to chat to a member of our team.

“Happy, vibrant, life-long learners”

“Happy, vibrant, life-long learners”

Pop along and try a group or for more information

please call **0121 443 3310** or email
office@brandwoodcentre.co.uk

Address: **157 Allens Croft Road, Kings
Heath, Birmingham B14 6RP**



Birmingham & Solihull Women's Aid 0808 800 0028 Childline 0800 1111

Aim High, Kindness, Community





Aim High, Kindness, Community

Community

“Happy, vibrant, life-long learners”

“Happy, vibrant, life-long learners”

Free

Benefit & Debt Advice

at The Brandwood Centre
Appointments available
Monday to Friday.

Free confidential and impartial advice in all areas of money management including budgeting, managing debt and claiming benefits. We can help you with PIP (Personal Independence Payment) applications, Universal Credit queries, back to work calculations, help with setting up payment plans, council tax support, grant applications and much more.

To book an appointment or for more information

please call **0121 443 3310** or email **office@brandwoodcentre.co.uk** Address: **157 Allens Croft Road, Kings Heath, Birmingham B14 6RP**

Cadent Your Gas Network **BRANDWOOD CENTRE**

Birmingham & Solihull Women’s Aid 0808 800 0028 Childline 0800 1111

Aim High, Kindness, Community





Aim High, Kindness, Community

Community



“Happy, vibrant, life-long learners”

“Happy, vibrant, life-long learners”

**OPERATION
SANTA**

“Delivering Hope at Christmas”



FUNDRAISING

? **QUIZ NIGHT!** ?

Friday 8th November 2024



Doors open at 7pm

Kings Heath Cricket Club

247 Alcester Road South, Kings Heath

Birmingham B14 6DT

£5 per person or £25 for a team of 6

To Book:

**Please email: 2021opsanta@gmail.com or
see Annabel at KHCC**

Birmingham & Solihull Women’s Aid 0808 800 0028 Childline 0800 1111

Aim High, Kindness, Community





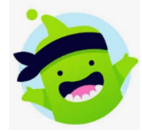
School Council

Demonstrating democracy and our commitment to British Values being a core part of life at Broadmeadow, the children voted on their school council this half term. Congratulations to those who were successful. We look forward to hearing your suggestions on how we can do things better.



Class Dojo

Class Dojo is now up and running with 87% of our children being connected to at least one family member. This term our most awarded point categories.



1. Ready to Learn (Community)
2. Good Work (Aim High)
3. Teamwork (Community)



Well done to Zach and Braida in year 1 who were our top point scorers!

Dates for your diary. (Also on the [website](#))

Parent Consultations - Tuesday 5th 2024 - Booking Links will be sent
 Consultations will be held on Tuesday 19th and Thursday 21st November 2024
 Thursday 14th November - Open Event—Reception 2025. 4.30pm-5.15pm
 Monday 2nd December 2024 (2.30-3pm) Irock Concert for parents of children who do IRock
 Friday 20th December @3.15pm - Children break up for Christmas holidays
 Further dates will be added to the calendar and sent out via Class Dojo and MCAS

Schools complete the early years foundation stage profile assessment between April and June of the academic year in which children turn 5, which is usually the reception year.

Schools administer the phonics screening check within the 1-week period from Monday 9 June 2025

“Happy, vibrant, life-long learners”

“Happy, vibrant, life-long learners”

Class Attendance Figures

Frequent absence can add up to a considerable amount of lost learning and can seriously disadvantage your child in adult life. a score of 90% in a test would be a good result but 90% attendance means that a child will have missed around 100 lessons over a school year.

RB	92%
RH	98%
1GT	93%
1W	94%
2L	93%
2A	97%

Congratulations to 2A and RH on beating our 96% target for the term. Who will beat it next term?

Whole School attendance this year - 94%

Term Dates

PLEASE DO NOT BOOK HOLIDAYS IN TERM TIME AS THEY CANNOT BE AUTHORISED. THANK YOU. SEE [WEBSITE](#) FOR MORE INFORMATION.

School Year 2024 to 2025

Autumn Term 2024

TED (Closed to pupils) 2nd and 3rd September 2024

Term Starts: Wednesday 4th September 2024

Half-term: Monday 28 October 2024 to Friday 1 November 2024

Term ends: Friday 20 December 2024

Spring Term 2025

TED (Closed to pupils) 6th January

Term Starts: Tuesday 7th January 2025

Half-term: Monday 17 February 2025 to Friday 21 February 2025

Term ends: Friday 11 April 2025

Summer Term 2025

Term Starts: Monday 28 April 2025

TED (Closed to pupils) Thursday 1st May 2025

Half-term: Monday 26 May 2025 to Friday 30 May 2025

Term ends: Friday 18th July 2025

TED (Closed to pupils) Monday 21 July 2025

